

Notice of Race

2017 Sawyer Bay Race

Thunder Bay Yacht Club
Revision June 19, 2017

This Notice of Race is to be used in conjunction with the 2017 TBYC Sailing Instructions. In cases where a discrepancy exists between the Notice of Race and the 2017 TBYC Sailing Instructions this Notice of Race will take precedence.

1. Schedule

- a. The race will take place on the date specified on the TBYC Racing Schedule.
- b. The anticipated race start time is 12:00 noon.
- c. There will be a skippers' meeting at **10:30 am** on Pier 1 near Dock A.

2. The Start

- a. The starting line will be a line set inside the break wall near the end of Pier One
- b. If the RC boat is on station the PRO will manage the starting sequence. If the RC boat is not on station a competing boat will be assigned to manage the starting sequence.
- c. All divisions will start together.
- d. Starting signals will be made by flag hoists and/or sound signals following the standard 5-4-1-start sequence. There will be a signal at five minutes prior to the start, another at four minutes prior, one at one minute prior and a final signal at the start ("go").
- e. Specific starting instructions will be provided at the skippers' meeting.

3. The Course will be either Option A or B. Specific instructions will be provided at the skippers' meeting.

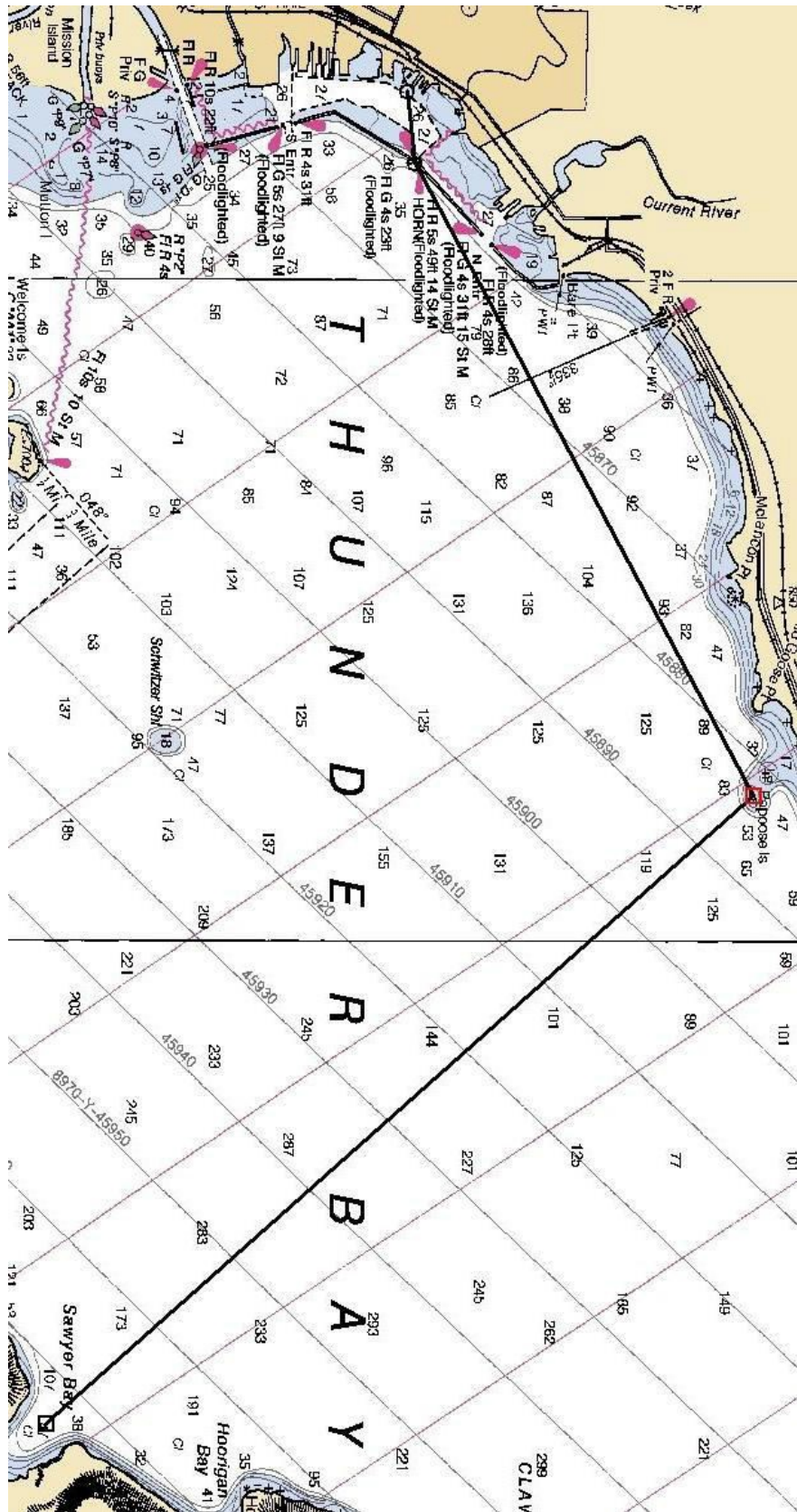
4. Course Option A (see diagram on page 2)

- a. Boats shall cross the start line in a north-eastern direction and proceed to the Main Gap.
- b. After passing through the Main Gap boats shall proceed to Papoose Island, leaving it to starboard.
- c. Proceed to Sawyers Bay.
- d. Proceed to the finish line. The finish line will be a line extending in a south-western direction from the dock at the north-eastern side of Sawyers Bay to a mark set by the first boat to finish. Cross the finish line in a south-eastern direction leaving the finishing mark to starboard. The mark will ideally be set toward the south-western side of Sawyers Bay.
- e. The first boat to finish shall remain on station to record subsequent finishing times and protest notifications.
- f. Course length is 17.66 NM.

5. Course Option B (see diagram on page 3)

- a. Boats shall cross the start line in a north-eastern direction and proceed to the Main Gap.
- b. After passing through the Main Gap boats shall proceed to Hare Island buoy (A2), leaving it to port.
- c. Proceed to Sawyers Bay.
- d. Proceed to the finish line. The finish line will be a line extending in a south-western direction from the dock at the north-eastern side of Sawyers Bay to a mark set by the first boat to finish. Cross the finish line in a south-eastern direction leaving the finishing mark to starboard. The mark will ideally be set toward the south-western side of Sawyers Bay.
- e. The first boat to finish shall remain on station to record subsequent finishing times and protest notifications. Course length is 18.91 NM.

Course Option A



Course Option B

